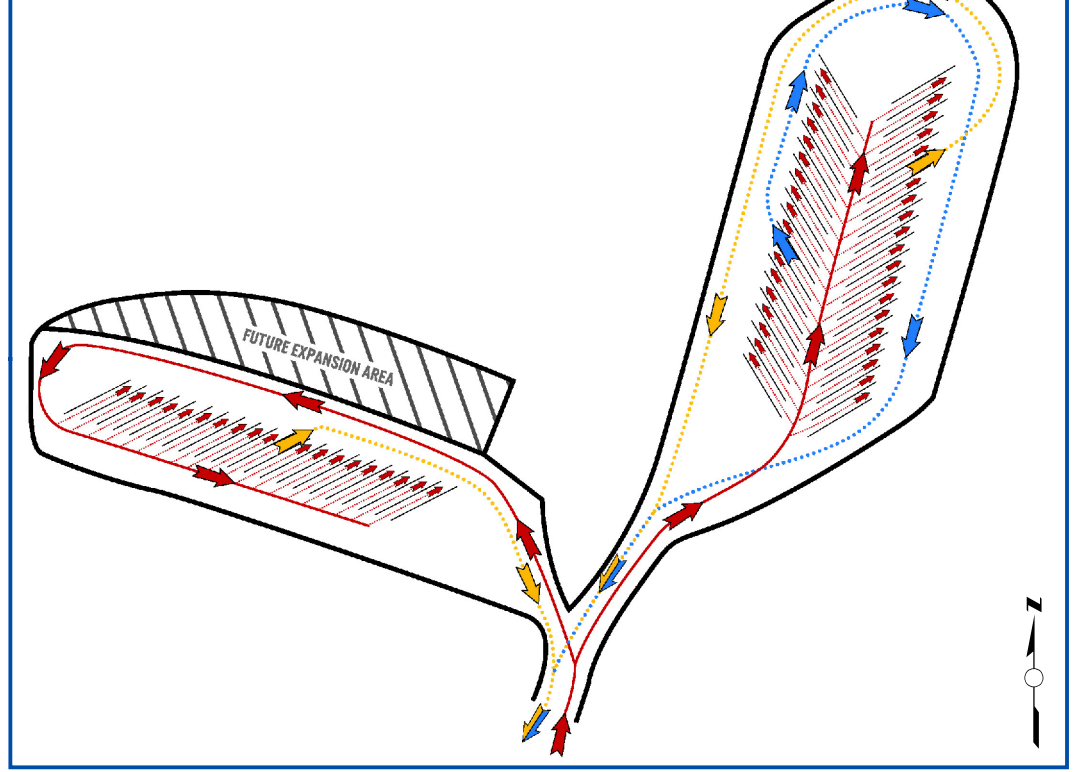
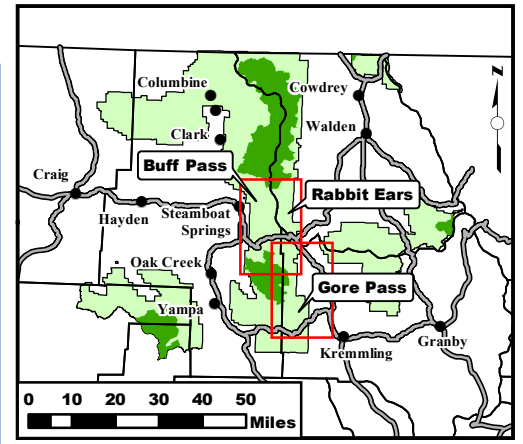
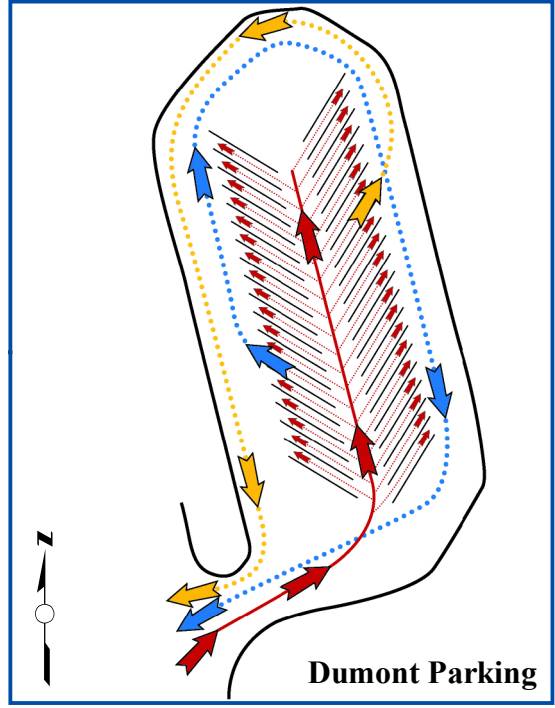


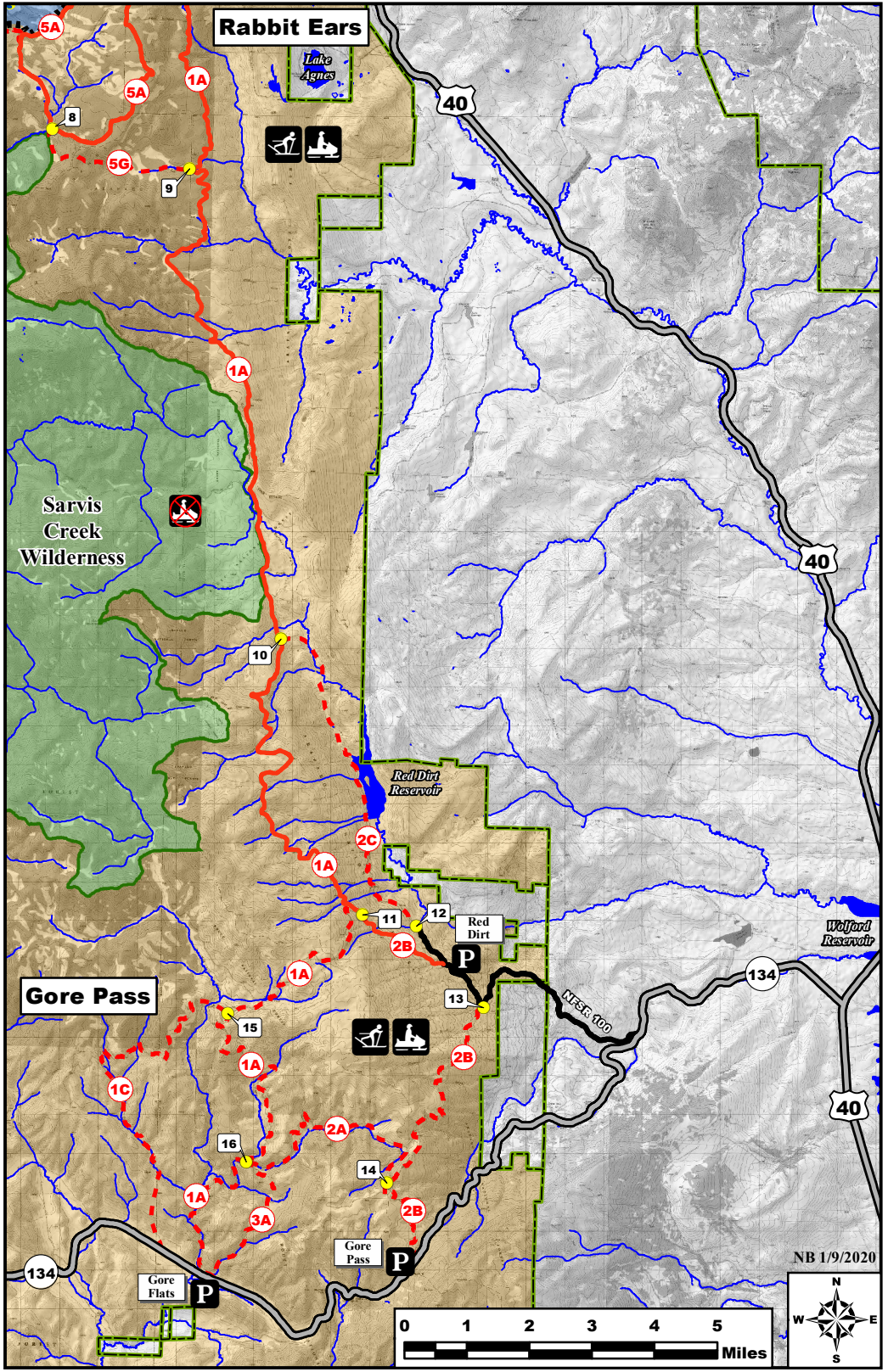
### Muddy Creek Parking



**A** Camping allowed at Muddy Creek and Dumont Parking Areas ONLY



Parking Lot Coordinates Lat/Long (DMS)		
Name	Latitude	Longitude
Dry Lake	40° 32' 04"	106° 47' 06"
Grizzly West	40° 33' 25"	106° 35' 50"
Dumont	40° 23' 24"	106° 38' 06"
Muddy Creek	40° 23' 15"	106° 37' 07"
Old Columbine	40° 23' 29"	106° 36' 11"
Red Dirt	40° 08' 44"	106° 32' 52"
Gore Pass	40° 04' 39"	106° 33' 29"
Gore Flats	40° 04' 20"	106° 37' 10"



- Intersection (see Lat/Long tables)
- Parking
- Groomed Snowmobile Route
- Ungroomed Snowmobile Route
- Non-motorized Winter Route
- Winter Recreation Use Boundary
- Municipal Water Supply PLEASE Stay Off Lakes
- Forest Boundary
- Non-Motorized Area Motorized Use Prohibited
- Motorized / Mixed Use Area
- Combined Commercial / Mixed Use Area
- Critical Elk Winter Range. Closed to all use unless otherwise authorized by USFS
- Winter Backcountry Permit Area, Permit Required For All Use
- Lynx / Wildlife Corridor Voluntary Restrictions on All Winter Use
- Wilderness Area - Motorized Use Prohibited

Intersection Coordinates Lat/Long (DMS)		
#	Latitude	Longitude
1	40° 32' 15"	106° 40' 36"
2	40° 32' 16"	106° 37' 53"
3	40° 28' 54"	106° 37' 01"
4	40° 28' 45"	106° 40' 58"
5	40° 28' 27"	106° 40' 54"
6	40° 27' 18"	106° 39' 47"
7	40° 25' 51"	106° 40' 11"
8	40° 20' 15"	106° 40' 28"
9	40° 19' 45"	106° 37' 57"

(NAD83, DMS - Degrees° Minutes' Seconds")		
#	Latitude	Longitude
10	40° 13' 13"	106° 36' 08"
11	40° 09' 24"	106° 34' 34"
12	40° 09' 16"	106° 33' 36"
13	40° 08' 09"	106° 32' 21"
14	40° 05' 41"	106° 34' 03"
15	40° 08' 00"	106° 36' 59"
16	40° 05' 57"	106° 36' 36"
17	40° 33' 22"	106° 36' 55"

- Intersection (see Lat/Long tables)
- Parking
- Groomed Snowmobile Route
- Ungroomed Snowmobile Route
- Non-Motorized Area Motorized Use Prohibited
- Motorized / Mixed Use Area
- Wilderness Area - Motorized Use Prohibited
- Forest Boundary

Avalanche beacon check stations are being installed at Muddy Creek, Dumont and Grizzly Creek parking areas, courtesy of the Colorado Snowmobile Association.